

N.E.1/4 OF N.E 1/4 OF
SECTION 4, T.6N., R.1W., S.L.B. & M.

3-1

TAXING UNIT: 03,10

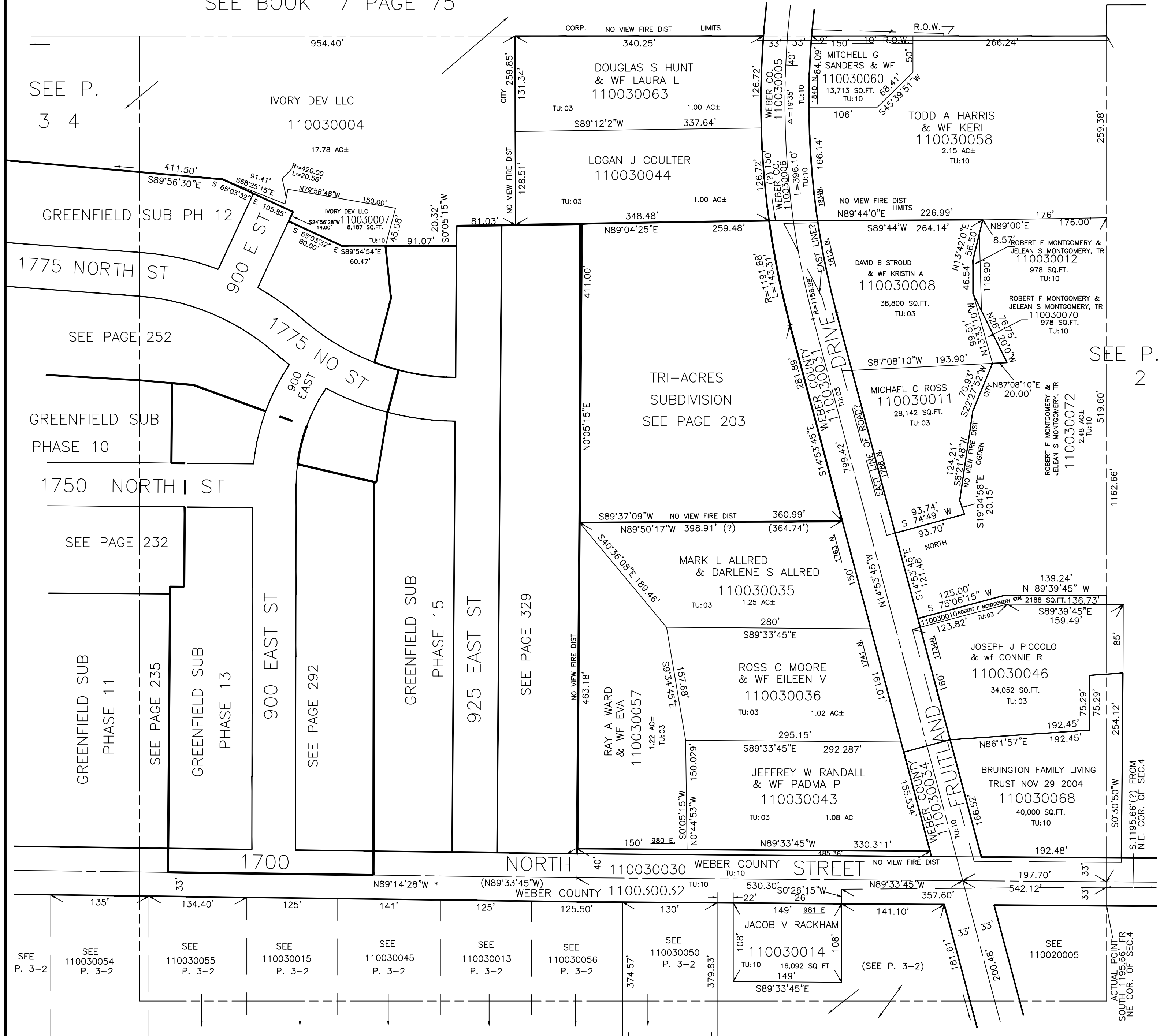
IN NORTH OGDEN CITY & WEBER COUNTY

PREFIX: 11-003

ALSO SEE PAGES 3-2,3,4

SEE BOOK 17 PAGE 75

SCALE 1" = 100'



SEE P.
3-4

SEE PAGE 252

SEE PAGE 232

SEE P.
2

SEE
P. 3-2

SEE
110030054
P. 3-2

SEE
110030055
P. 3-2

SEE
110030015
P. 3-2

SEE
110030045
P. 3-2

SEE
110030013
P. 3-2

SEE
110030056
P. 3-2

SEE
110030050
P. 3-2

SEE
110030014
P. 3-2

(SEE P. 3-2)

SEE
110020005

NOTE : DATA FOR MOUNTAIN ROAD & FRUITLAND DRIVE
TAKEN FROM COUNTY SURVEYOR'S MAPS. MAR. 1963

SEE P. 3-2

* 1700 N. ST. ALIGNMENT
40-12 27-JUN-95